

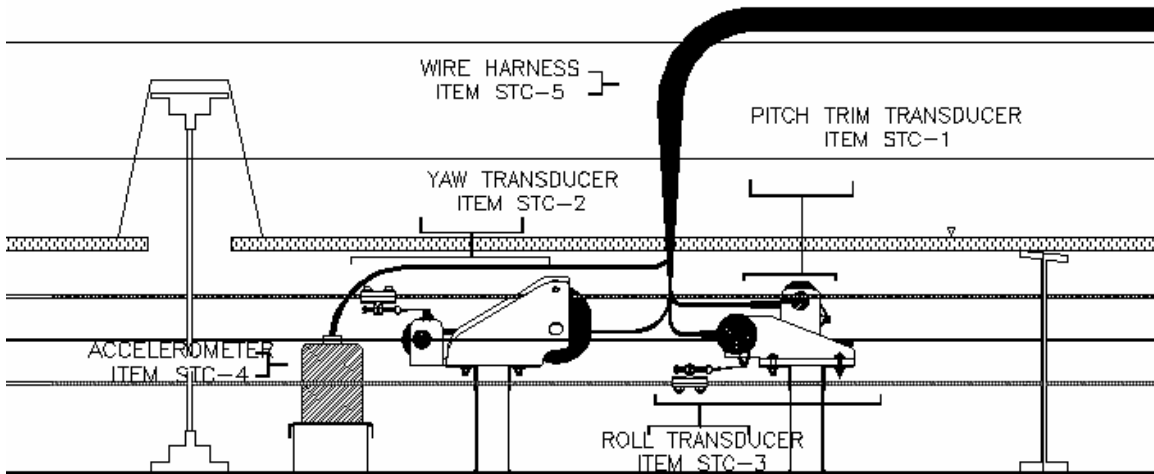
# Raytheon Aircraft

## BEECH 1900D AIRLINER ILLUSTRATED PARTS CATALOG DESIGN AND MAINTENANCE ANALYSIS INC. STC SUPPLEMENT

**File this supplement facing 34-50-00 Page 2, Figure 50-00.**

The existing IPC provided in the Beechcraft 1900D Airliner Illustrated Parts Catalog in 34-50-00, Figure 50-00, Flight Data Recording System is applicable to the modified system with the following changes.

On 34-50-00 Page 2, Figure 50-00, Flight Data Recorder System Sheet 1 of 4 Sheets, Replace the Existing View B with the following View.



VIEW B

### ITEMIZATION OF PARTS ADDED BY STC.

Item Number	Part Number	Description	Units per Assy.	Usable On	
STC-1	SC1900-2-3	Pitch Trim Transducer Assy.	1	All with STC	
Attaching Parts	MS20365-1032A	Nut	4	All with STC	
	MS27039-1-12	Screw	4		
	AN960-10	Washer	8		
STC-2	SC1900-2-4	Yaw Transducer Assy.	1	All with STC	
Attaching Parts	MS20365-1032A	Nut	4	All with STC	
	MS27039-1-12	Screw	4		
	AN960-10	Washer	8		
STC-3	SC1900-2-2	Roll Transducer Assy.	1	All with STC	
Attaching Parts	MS20365-1032A	Nut	4	All with STC	
	MS27039-1-12	Screw	4		
	AN960-10	Washer	8		
STC-4	3001-01-111-2 or 1900-2-12	Accelerometer, 3 Axis Accelerometer, Lateral	1 1	All with STC	
Attaching Parts	MS27039-1-12	Screw	4	All with STC	
	AN960-10	Washer	8		
	Or for Stand Alone: 1900-4-121		Mounting Plate		
	MS27039-1-13	Screw	1		
	MS20365-1032A	Nut	2		
	AN960-10	Washer	2		
	MS27039-1-11	Screw	4		
STC-5	1900-2-501	Wire Harness, Tri-Axial	1	All with STC	
	or for Stand Alone: 1900-2-502	Wire Harness, Stand Alone Lateral	1		